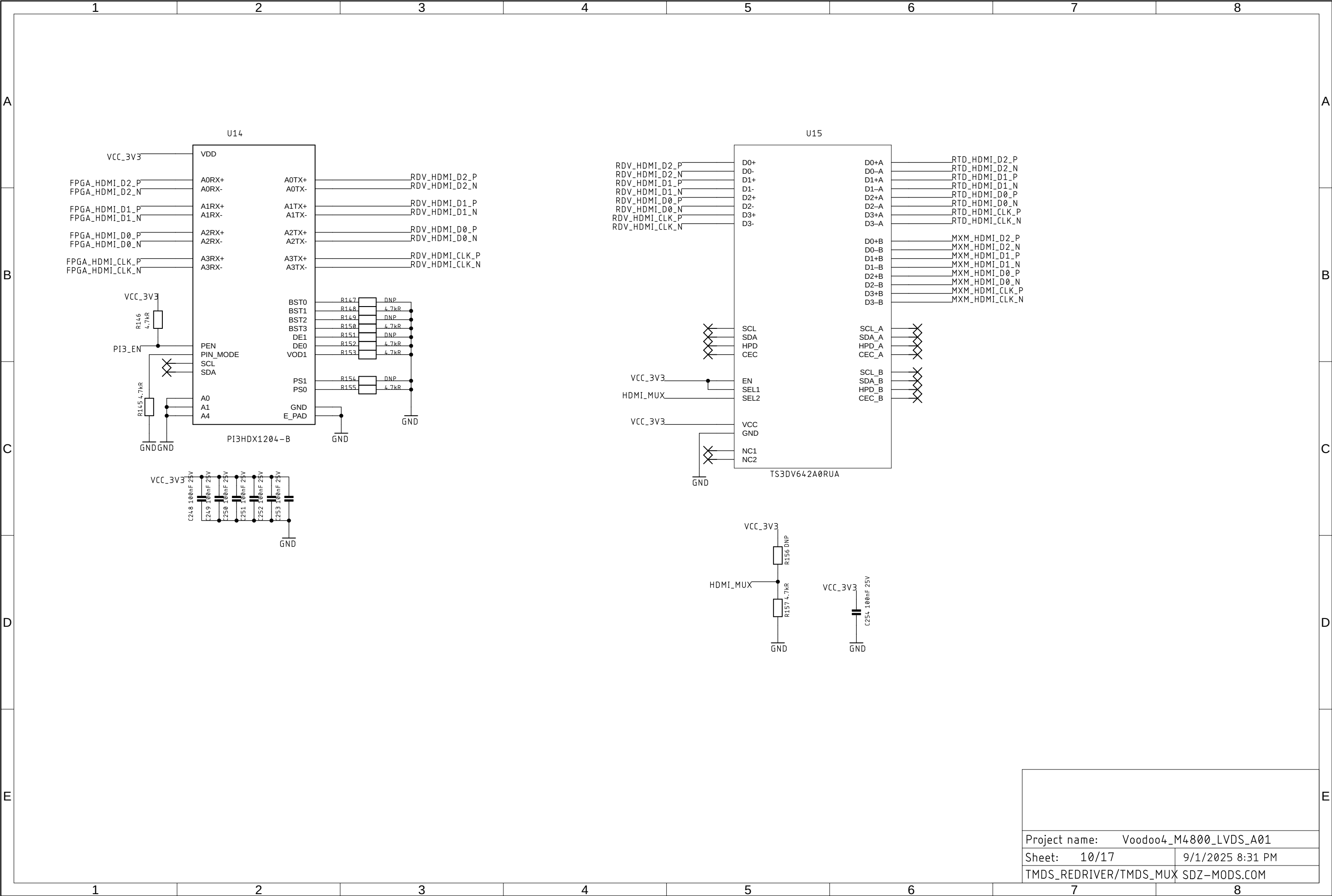
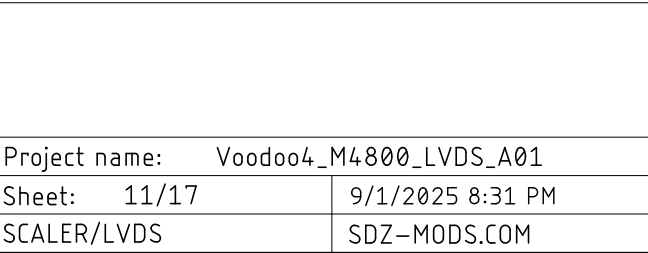
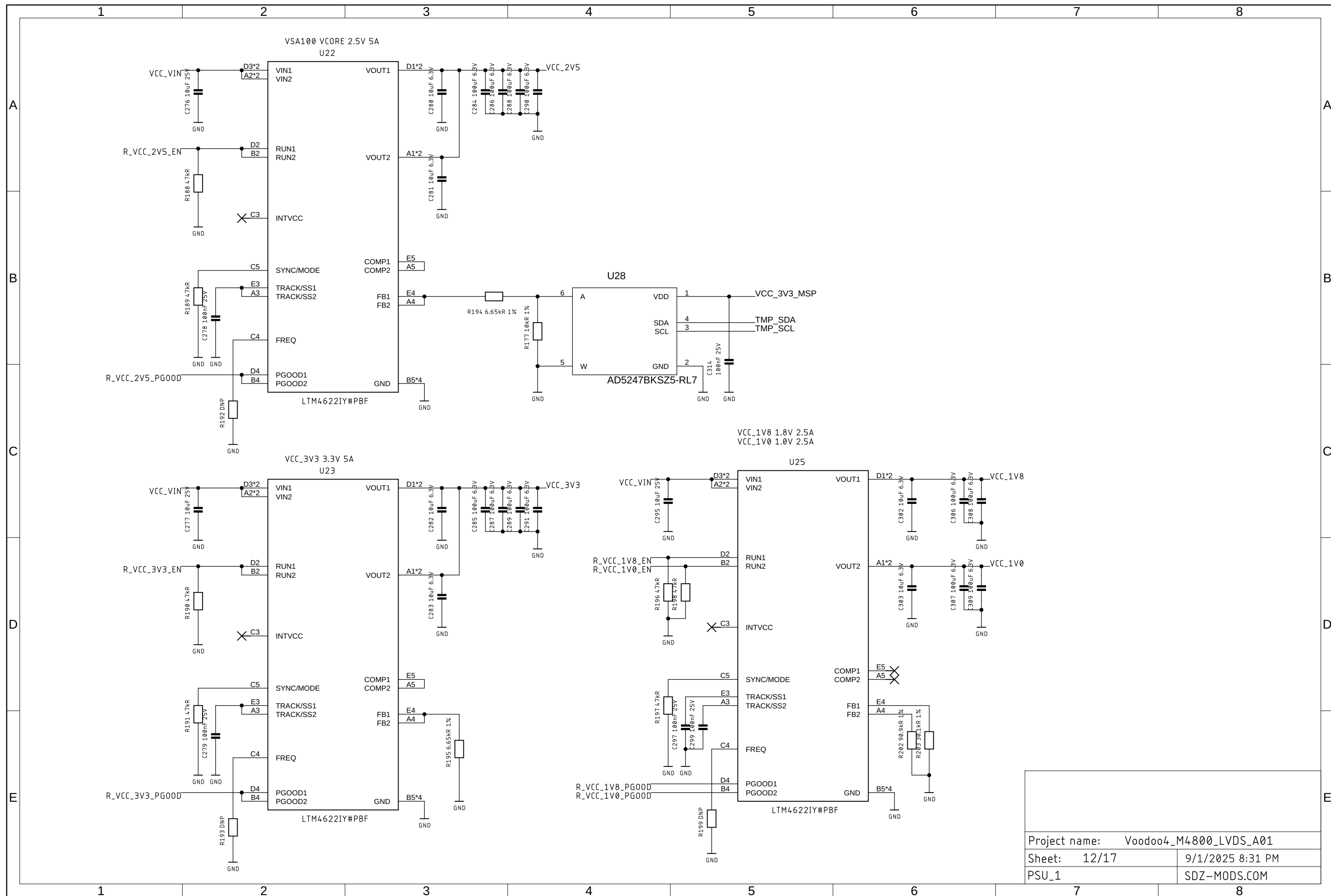


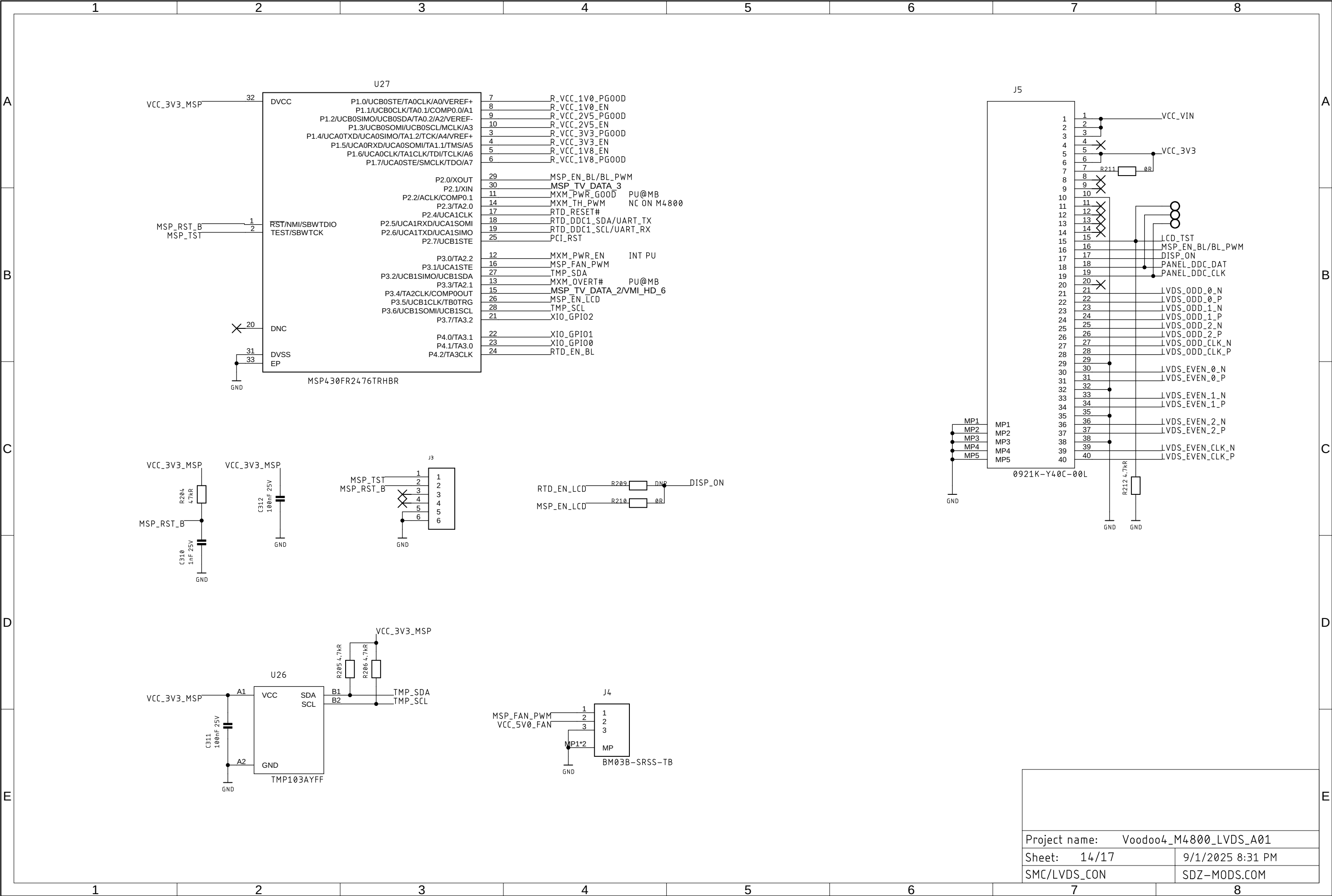
Project name: Voodoo4_M4800_LVDS_A01	
Sheet: 9/17	9/1/2025 8:31 PM
FPGA_BANK14/34	SDZ-MODS.COM

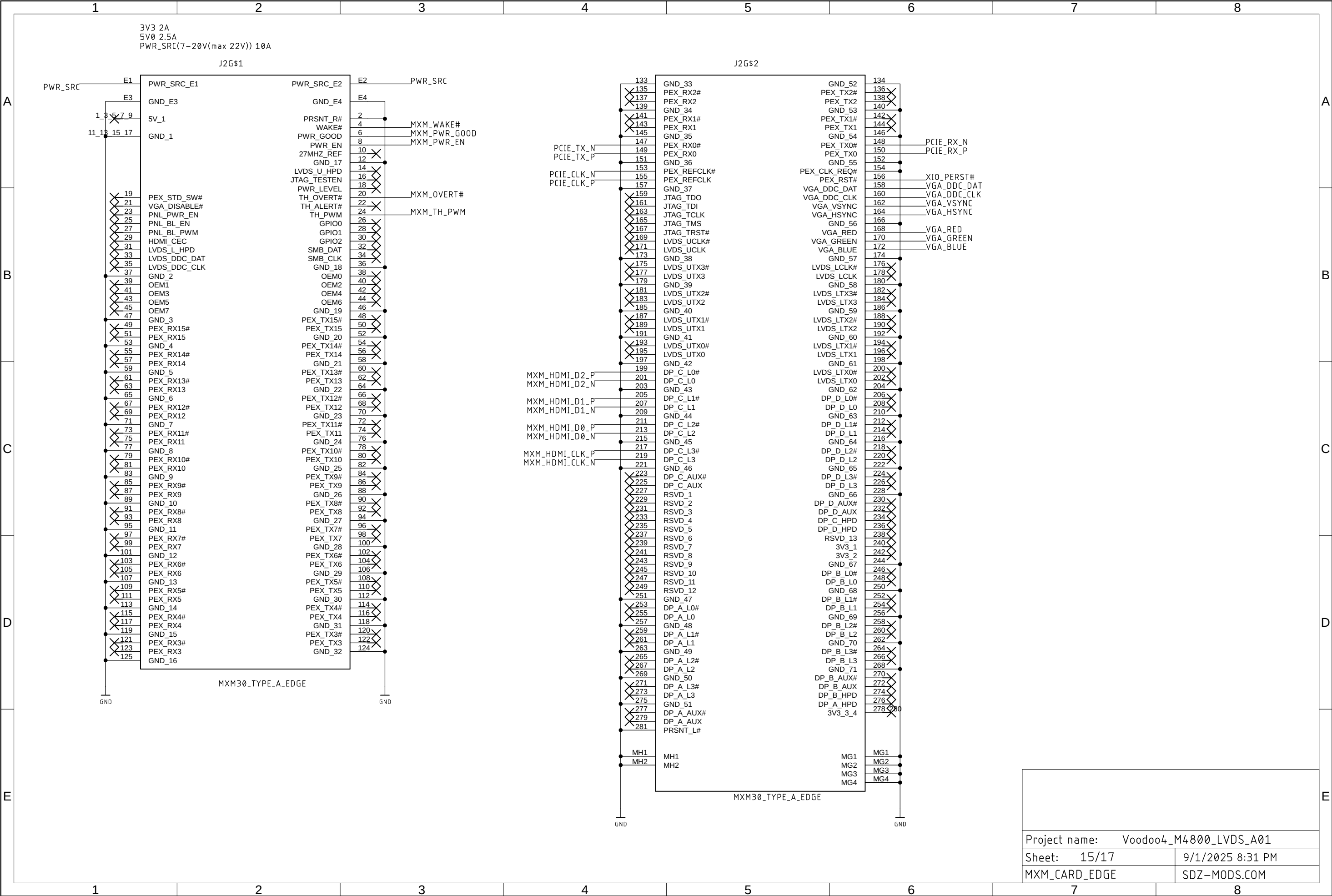






Project name: Voodoo4_M4800_LVDS_A01	
Sheet: 12/17	9/1/2025 8:31 PM
PSU_1	SDZ-MODS.COM





	1	2	3	4	5	6	7	8										
A	<div>A01:</div> <div><div>-Changed board name to Voodoo4 M4800 LVDS A01</div><div>-Added Q2 and Q3 for switching the VSA0_TV_DATA_3, VSA0_TV_DATA_2, VSA0_VMI_HD6/ROM_DATA6/AA_DATA6 straps from the SMC. This allows to configure the card for 32MB or 64MB FB size.</div><div>-Removed SMC Scaler OSD controls, freed up 5 SMC GPIOs</div><div>-Connected XI02100 PCI_RST signal to SMC. Needed to know when to apply VSA memory straps, as the VSA will not work correctly if they are applied at runtime.</div><div>-Connected Scaler LCD_BL_EN/PWM to SMC. This allows the SMC to have control over the panel backlight, and implement an off feature when the scaler doesn't receive an input signal.</div><div>-Connected XI02001 GPIO0, GPIO1, GPIO2 to SMC. This allows implementing a bidirectional communication channel between the host OS and the SMC.</div><div>-Added U28 digipot for controlling the VSA VCORE from the SMC</div><div>-Changed TMP103 power rail from 3V3 to 3V3_MSP</div><div>-RTD scaler stability: increased C257 from 100nF to 1uF so it doesn't glitch out during power on. Connected U18 (scaler flash) WP# to GND so that the scaler does not corrupt its own flash during power down.</div></div>								A									
B									B									
C									C									
D									D									
E							<div></div> <table><tr><td>Project name:</td><td colspan="2">Voodoo4_M4800_LVDS_A01</td></tr><tr><td>Sheet:</td><td>17/17</td><td>9/1/2025 8:31 PM</td></tr><tr><td>Changelog</td><td colspan="2">SDZ-MODS.COM</td></tr></table>		Project name:	Voodoo4_M4800_LVDS_A01		Sheet:	17/17	9/1/2025 8:31 PM	Changelog	SDZ-MODS.COM		E
Project name:	Voodoo4_M4800_LVDS_A01																	
Sheet:	17/17	9/1/2025 8:31 PM																
Changelog	SDZ-MODS.COM																	
	1	2	3	4	5	6	7	8										